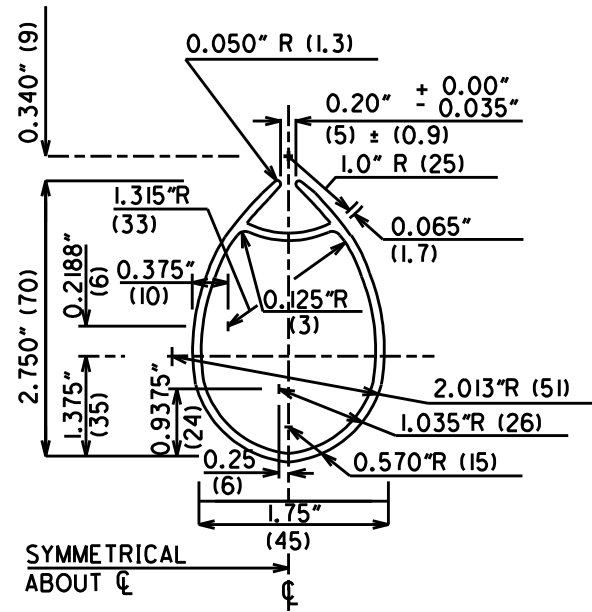


**SECTION B-B**  
(THROUGH ALUM. MAST)

EST. AREA = 1.221 IN (788mm) <sup>2</sup>  
 EST. WT/FT = 1.436 Lb (2.137 Kg/m)  
 WALL THICKNESS = 0.100" (2.54)  
 ± 0.01" (0.25)



**SECTION D-D**  
(THROUGH ALUM. BOOM)

EST. AREA = 0.763 IN (492mm) <sup>2</sup>  
 EST. WT/FT = 0.897 Lb (1.335 Kg/m)  
 WALL THICKNESS = 0.095" (2.41)  
 ± 0.01" (0.25)

**NOTES**

1. ALLUMINUM SPAR MUST BE PEAR SHAPPED AS SHOWN FLOATION MUST ALSO BE ASSURED.
2. NO HALYARDS ALLOWED INSIDE OF MAST SECTION
3. HEIGHT OF SPAR ABOVE TOP RACING BAND IS OPTIONAL.
4. RACING BAND DIMENSIONS ARE THE SAME ON ALL MASTS AND BOOMS. RACING BANDS ARE 1/2", (13) WIDE AND OF CONTRASTING COLOR TO MAST & BOOM.
5. SIDE STAYS AND FORESTAY SHALL BE 1/8" (3) MIN DIAMETER STAINLESS STEEL WIRE.

SHT. #  
10/13

DATE  
JUNE 2004

DWG:  
CHK TK

INTERLAKE SAILING CLASS  
ASSOCIATION  
SPAR TYPICAL SECTIONS