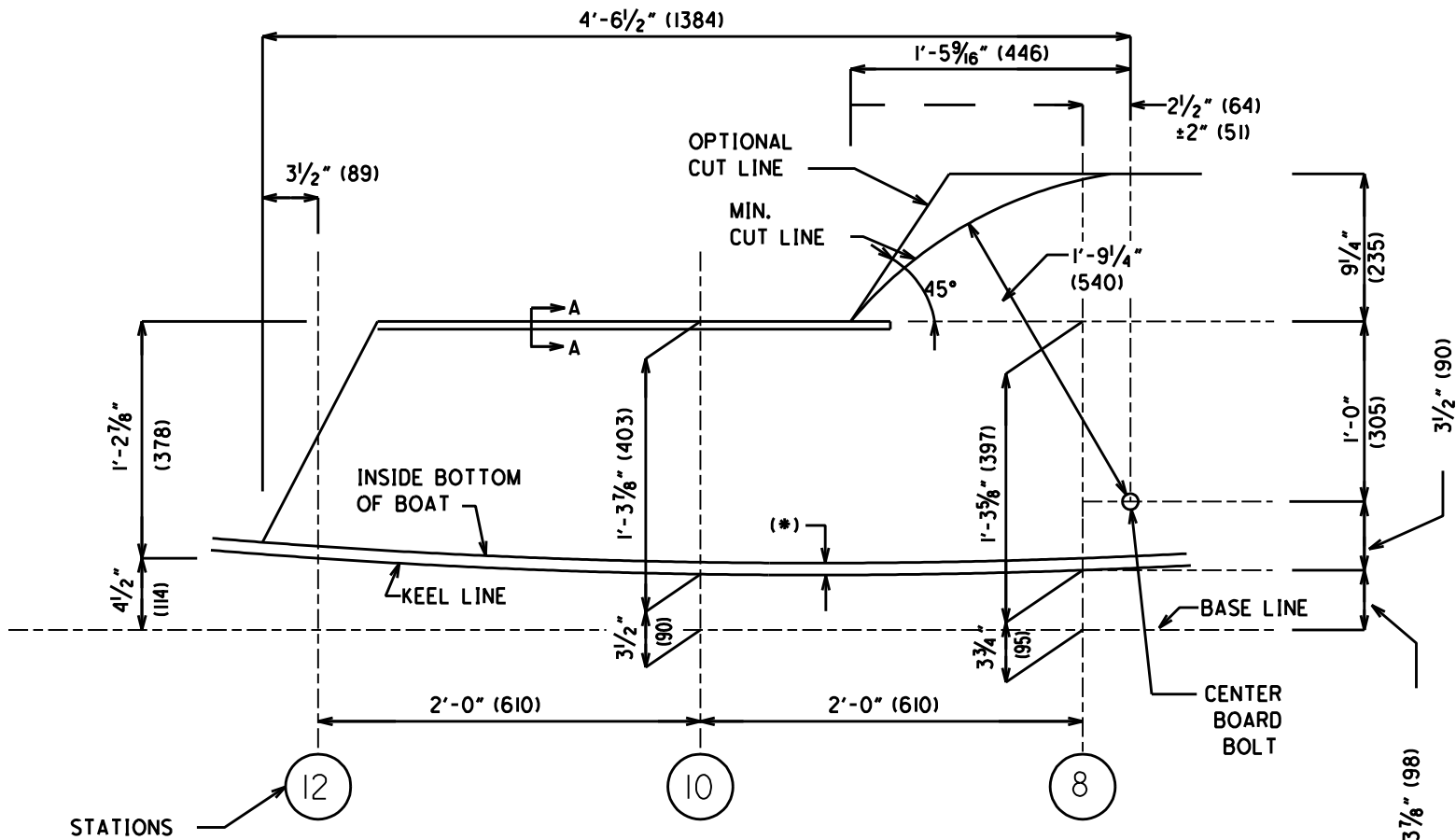


SECT. A-A

SEE SHT 7/13 FOR ADDITIONAL DETAILS



CUT-DOWN CENTERBOARD LAYOUT

(\* ) ALLOW 3/4" (19) FOR THICKNESS OF BOAT BOTTOM W/ CORE OR 1/4" (6) W/O CORE

SHT. #  
8/13

DATE  
JUNE  
2004

DWG:  
CHK  
TK

INTERLAKE SAILING CLASS  
ASSOCIATION  
CENTER BOARD TRUNK LAYOUT